

Belview



Studio Space, Universal Building, Manchester, M12

£500 PCM

Studio Space, Universal Building, Manchester, M12

Nestled within the highly sought-after Universal Building on Devonshire Street North, this exceptional studio occupies an entire floor dedicated to creative professionals. With a host of amenities and thoughtful design, this versatile space is perfect for those seeking a productive and inspiring working environment.

Key Features:

Size: Offering approximately 322.15 square feet (29.93 square metres) of adaptable space, ideal for a range of creative ventures.

Prime Location: Conveniently situated near Ardwick railway station and just 0.7 miles from Piccadilly station, commuting is effortless. The lively city centre is a mere 15-minute stroll away, ensuring easy access to all the amenities Manchester has to offer.

High-Speed Wifi: Enjoy newly installed, fast wifi at no additional cost, ensuring you stay connected and productive.

Facilities: The studio benefits from lift access, including dedicated loading lifts for ease of moving equipment and materials. There's



also a private toilet, a communal sink area, and communal bins for kitchen waste, making day-to-day operations hassle-free.

Security: Your peace of mind is assured with state-of-the-art CCTV surveillance and a dedicated on-site security guard, offering 24/7 protection.

Parking: Onsite parking is available for added convenience, with paid parking options provided.

Terms:

Rent: £500 per calendar month (pcm).

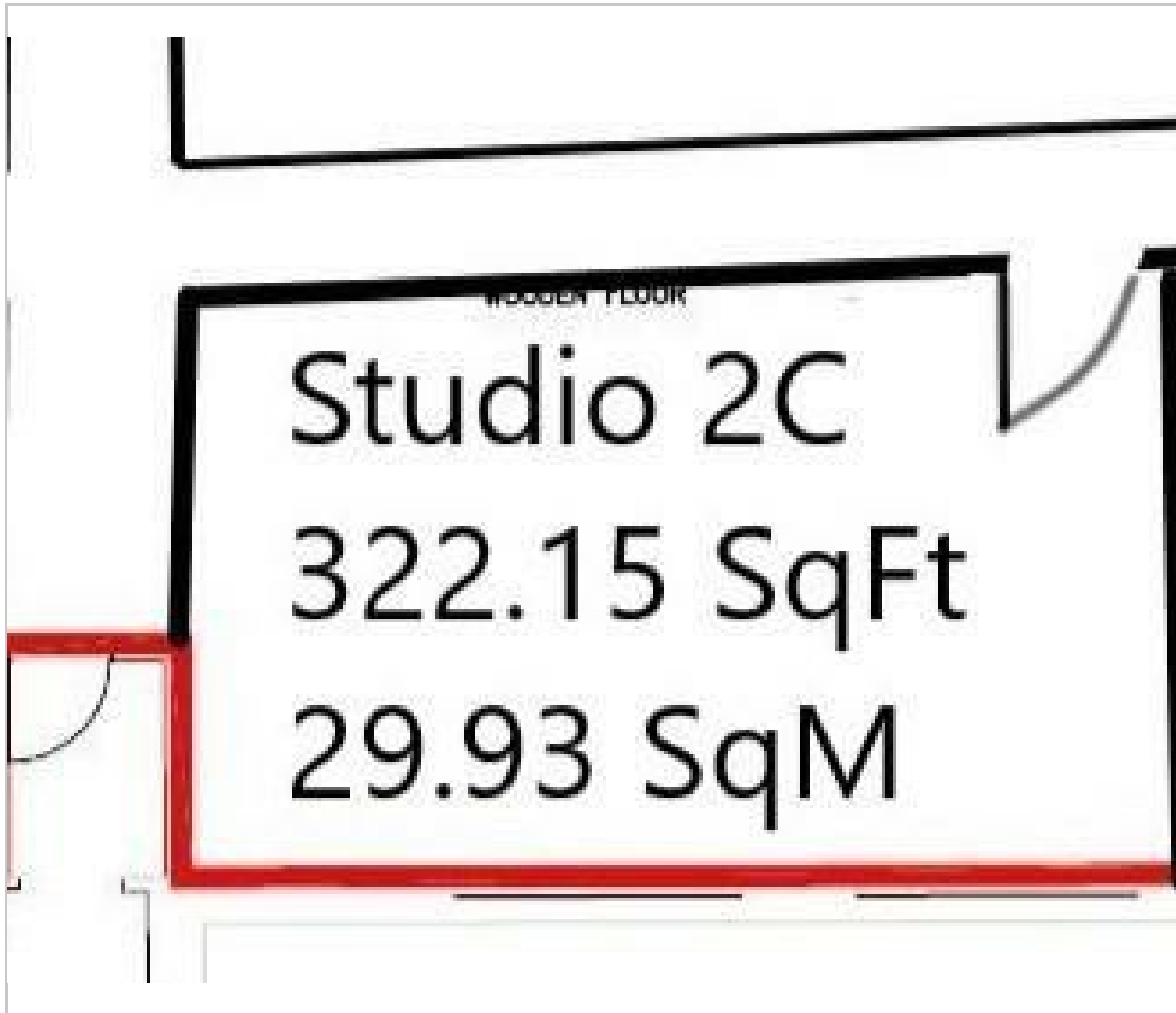
Deposit: A two-month rent deposit is required to secure this outstanding space.

Furnishing: Offered unfurnished, allowing you to tailor the space to suit your specific requirements.

Availability: Ready for immediate occupancy.

Don't miss this opportunity to elevate your business in a prestigious and dynamic setting. For further details or to arrange a viewing, please contact Belview today.

Floor Plan

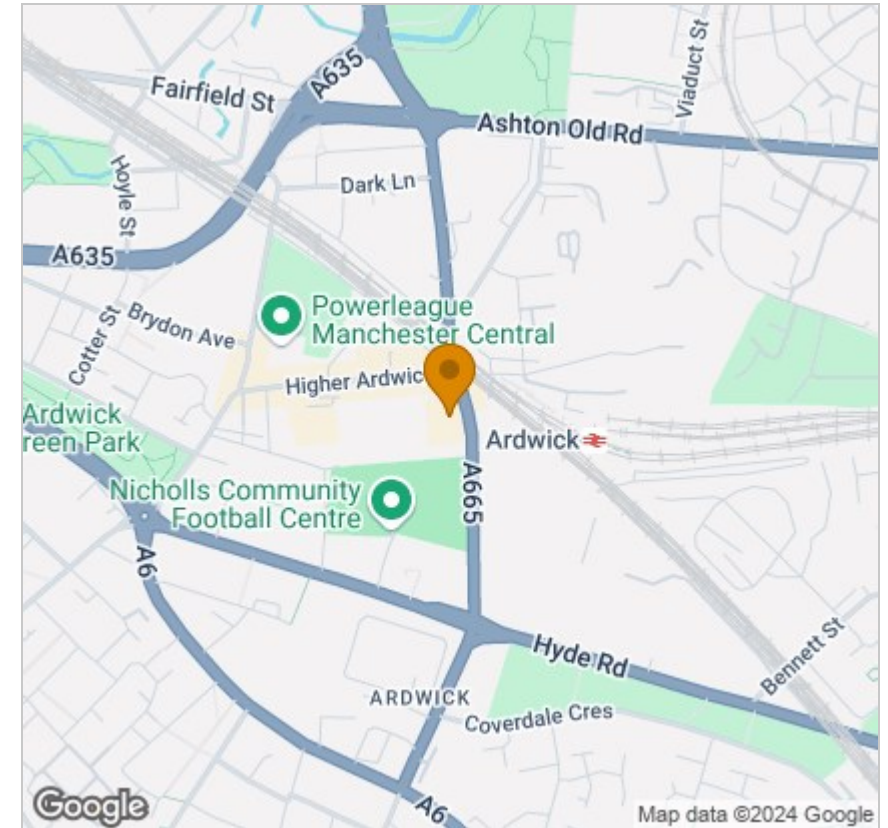


Viewing

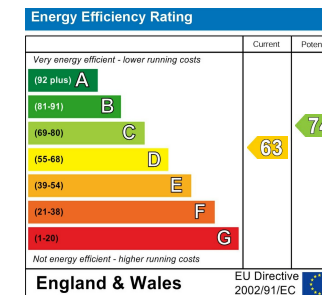
Please contact our Manchester Office on 0161 296 8655 if you wish to arrange a viewing appointment for this property or require further information.

39 Broughton Street Cheetham Hill, Manchester, Lancashire, M8 8LZ
Tel: 0161 296 8655 Email: manchester@belview.com www.belview.com

Area Map



Energy Efficiency Graph



These particulars, whilst believed to be accurate are set out as a general outline only for guidance and do not constitute any part of an offer or contract. Intending purchasers should not rely on them as statements of representation of fact, but must satisfy themselves by inspection or otherwise as to their accuracy. No person in this firm's employment has the authority to make or give any representation or warranty in respect of the property.