

# Belview



Studio (440 sq ft.), Universal Building, Devonshire Street North,  
Manchester, M12

**£900 PCM**

## Studio (440 sq ft.), Universal Building, Devonshire Street North, Manchester, M12

Belview is pleased to present this characterful commercial studio within the iconic Universal Building on Devonshire Street North, Manchester — a well-established creative and business hub just outside the city centre.

Positioned on a floor shared with other creative studios and small independent businesses, the unit benefits from a collaborative yet professional atmosphere, making it ideal for creatives, freelancers, designers, consultants, and growing businesses.

The studio features a distinctive painted finish, adding personality while remaining versatile. A private kitchenette is incorporated within the unit, offering everyday convenience.

### Property Details:

-Size: Approx. 440 sq ft (40.88 sq m)

-Rent: £900 per calendar month (all-inclusive)

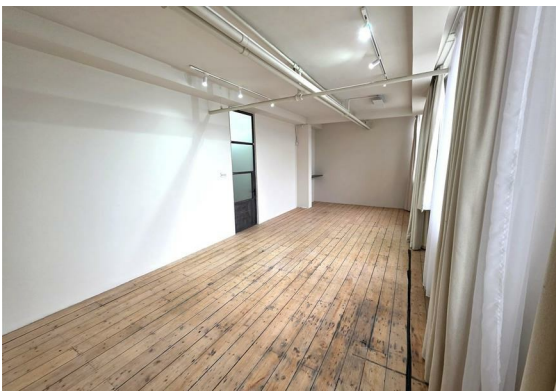
-Deposit: Two months' rent

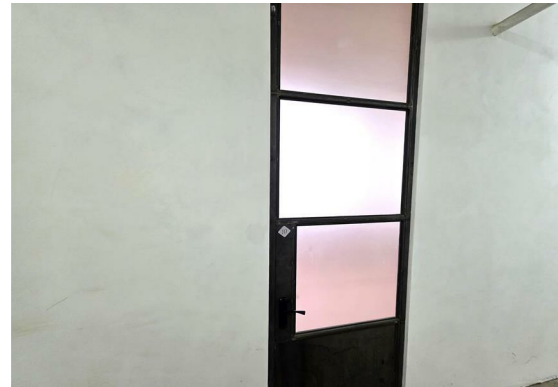
-Furnishing: Unfurnished, allowing occupiers to tailor the space to their needs

### Key Features:

-All-inclusive rent – including WiFi, service charge, and building insurance

-High-speed internet included





- Characterful interior with a unique painted finish
- Private kitchenette within the studio
- Located alongside other creative studios and small businesses
- Secure commercial building with 24/7 CCTV and on-site security presence
- Lift and loading access, with stairwell also available
- On-site paid parking available

#### On-Site Amenities:

The Universal Building benefits from an on-site café and several takeaway food options, providing added convenience during the working day.

#### Location Highlights:

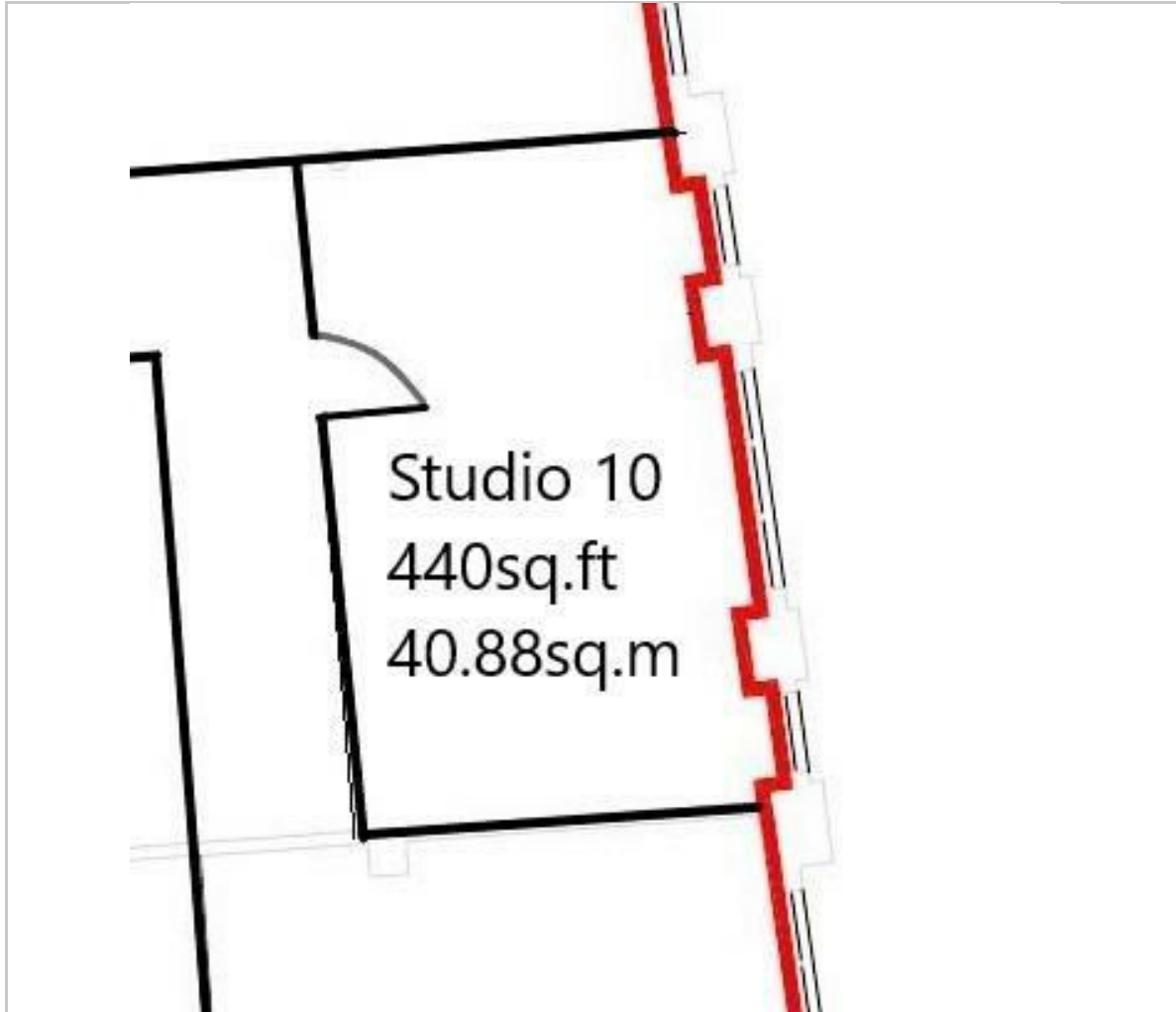
- Moments from Ardwick Railway Station
- Approx. 0.7 miles from Manchester Piccadilly
- 15-minute walk to Manchester city centre
- Excellent transport links to surrounding commercial areas

This studio offers an excellent opportunity to secure a distinctive, well-connected workspace within one of Manchester's most recognisable mixed-use buildings.

For further information or to arrange a viewing, please contact Belview today.



## Floor Plan



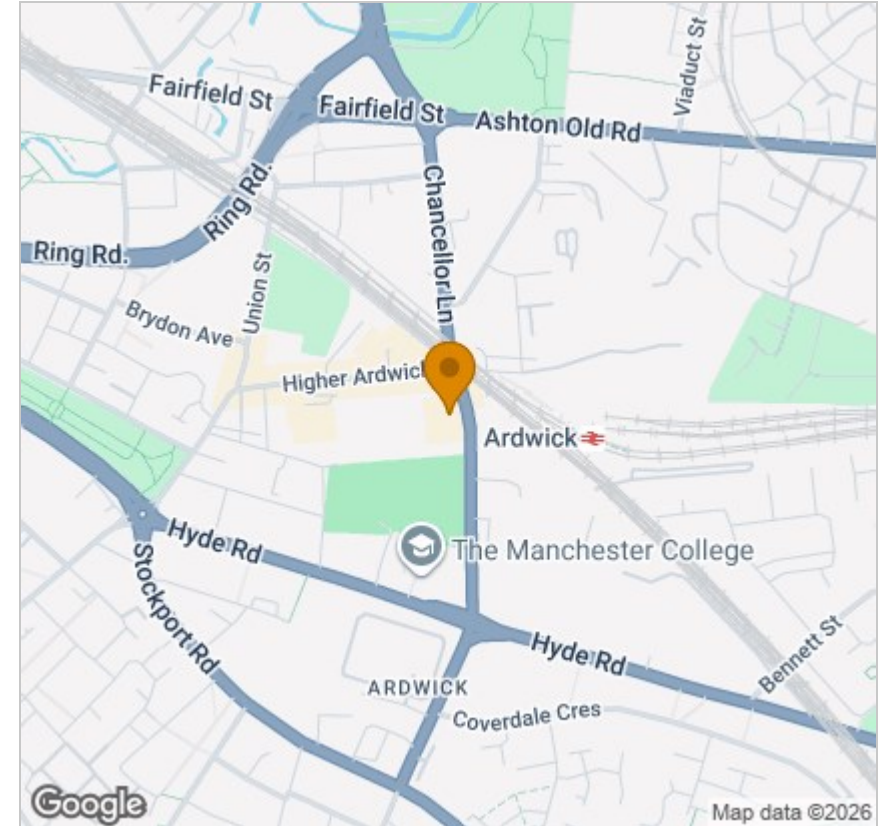
## Viewing

Please contact our Manchester Office on 0161 296 8655 if you wish to arrange a viewing appointment for this property or require further information.

These particulars, whilst believed to be accurate are set out as a general outline only for guidance and do not constitute any part of an offer or contract. Intending purchasers should not rely on them as statements of representation of fact, but must satisfy themselves by inspection or otherwise as to their accuracy. No person in this firm's employment has the authority to make or give any representation or warranty in respect of the property.

39 Broughton Street Cheetham Hill, Manchester, Lancashire, M8 8LZ  
Tel: 0161 296 8655 Email: manchester@belview.com <https://belview.com/>

## Area Map



## Energy Efficiency Graph

