

Belview



Ground Floor Unit (1878 sq ft), Universal Building, Devonshire
Street North, Manchester, M12

£1,565 Per month

Ground Floor Unit (1878 sq ft), Universal Building, Devonshire Street North, Manchester, M12

Located within the iconic Universal Building, this newly created ground-floor unit offers high-quality, self-contained workspace ideal for a range of businesses, from creative and media occupiers to wellness, training and hybrid commercial users, seeking a well-connected Manchester location.

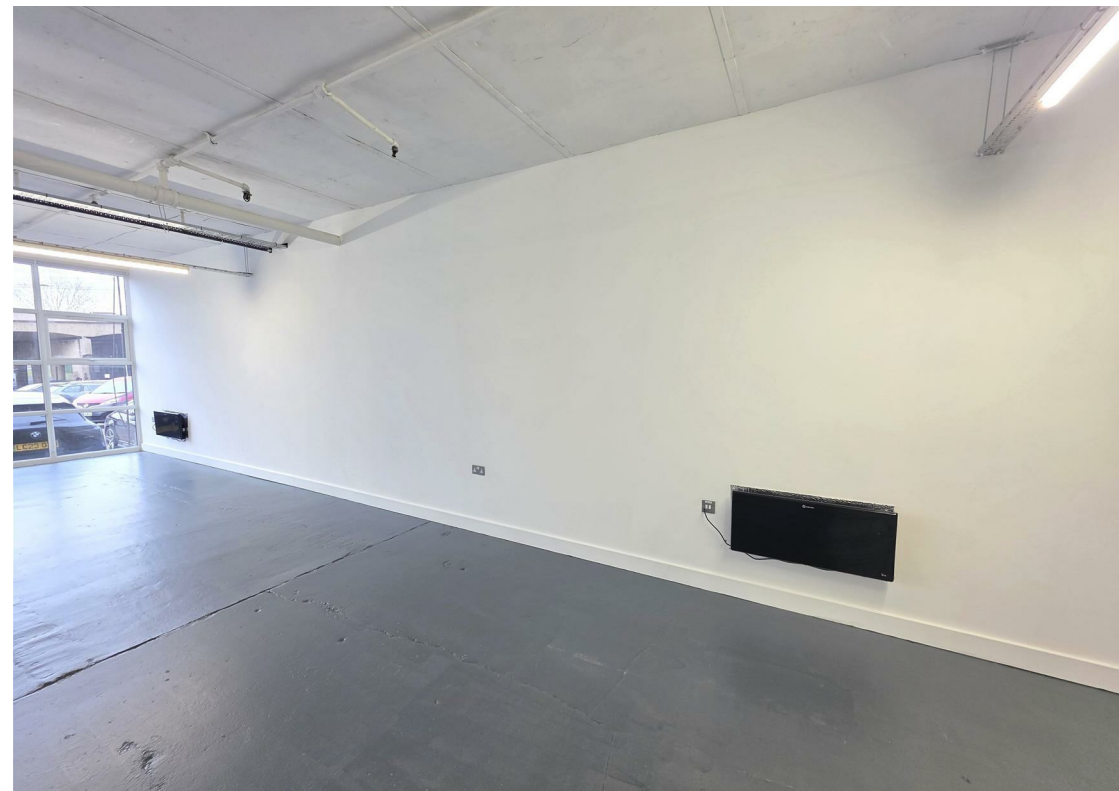
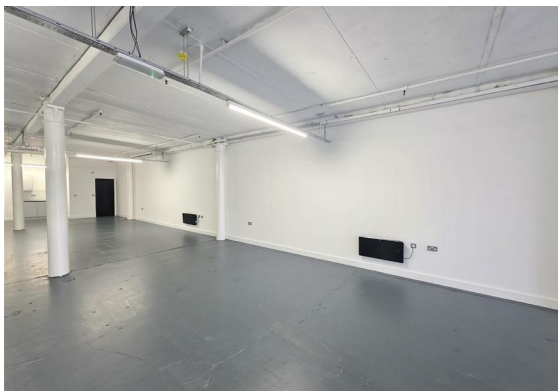
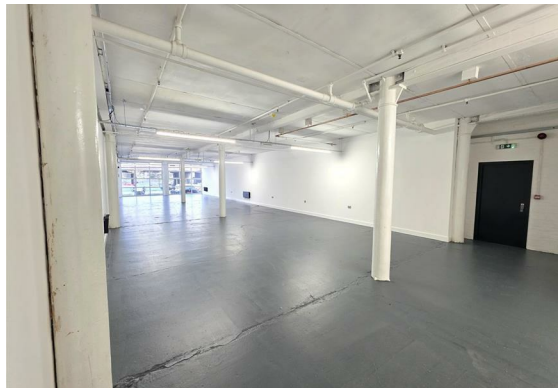
The unit forms part of a recent refurbishment and subdivision of a larger ground-floor space, resulting in modern, efficient accommodation finished to a strong specification and ready for occupation.

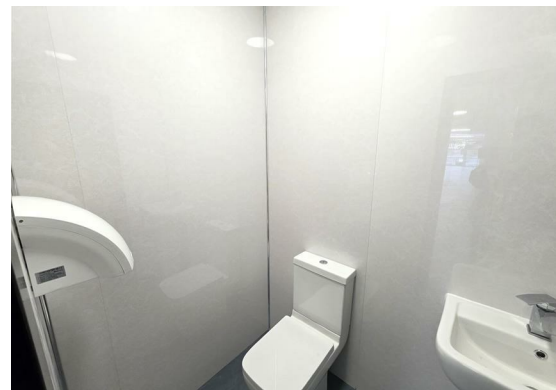
Accommodation

The unit extends to approximately 1878 sq ft, providing an open and flexible layout suitable for a variety of operational requirements. The space is entirely self-contained, allowing occupiers full control over their working environment.

Key Features

- Newly split and refurbished ground-floor unit
- Large windows throughout, providing excellent natural light
- Brand-new electrical wiring with plentiful power sockets
- Brand-new kitchenette and WC
- Roller blinds fitted to all windows for privacy
- Smart access system with entry via fingerprint and code
- Fully self-contained
- Ground floor position offering easy access for clients and deliveries





-Unfurnished, allowing flexibility for fit-out and branding

Location

Situated on Devonshire Street North, the Universal Building occupies a highly accessible city-fringe position:

- Moments from Ardwick Railway Station
- Approximately 0.7 miles from Manchester Piccadilly
- Manchester city centre reachable within a 15-minute walk
- Excellent access to surrounding commercial districts and major road links

Security & Building Amenities

- CCTV surveillance throughout the building
- On-site security guard
- Professionally managed communal areas
- Established and diverse business community

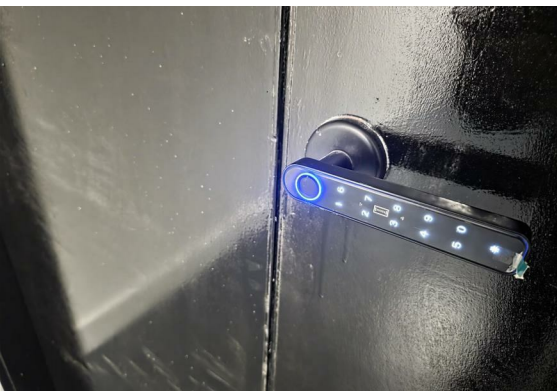
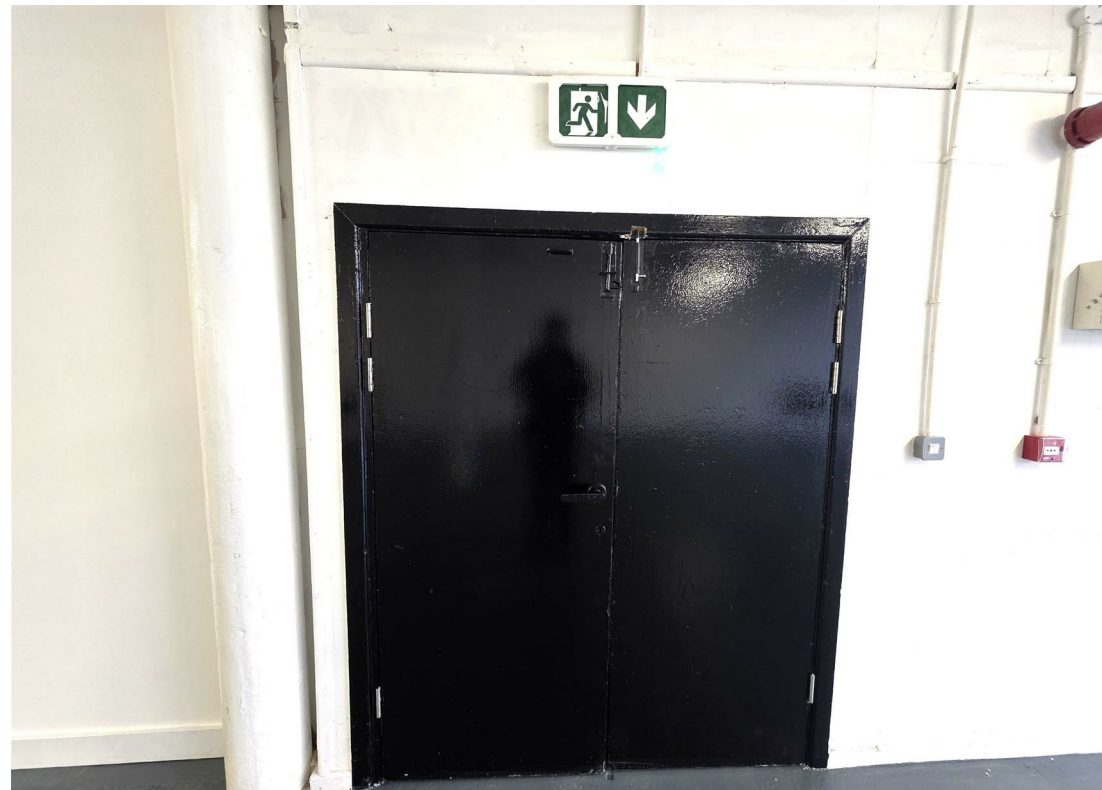
Parking

- One allocated parking space included
- Additional parking spaces available

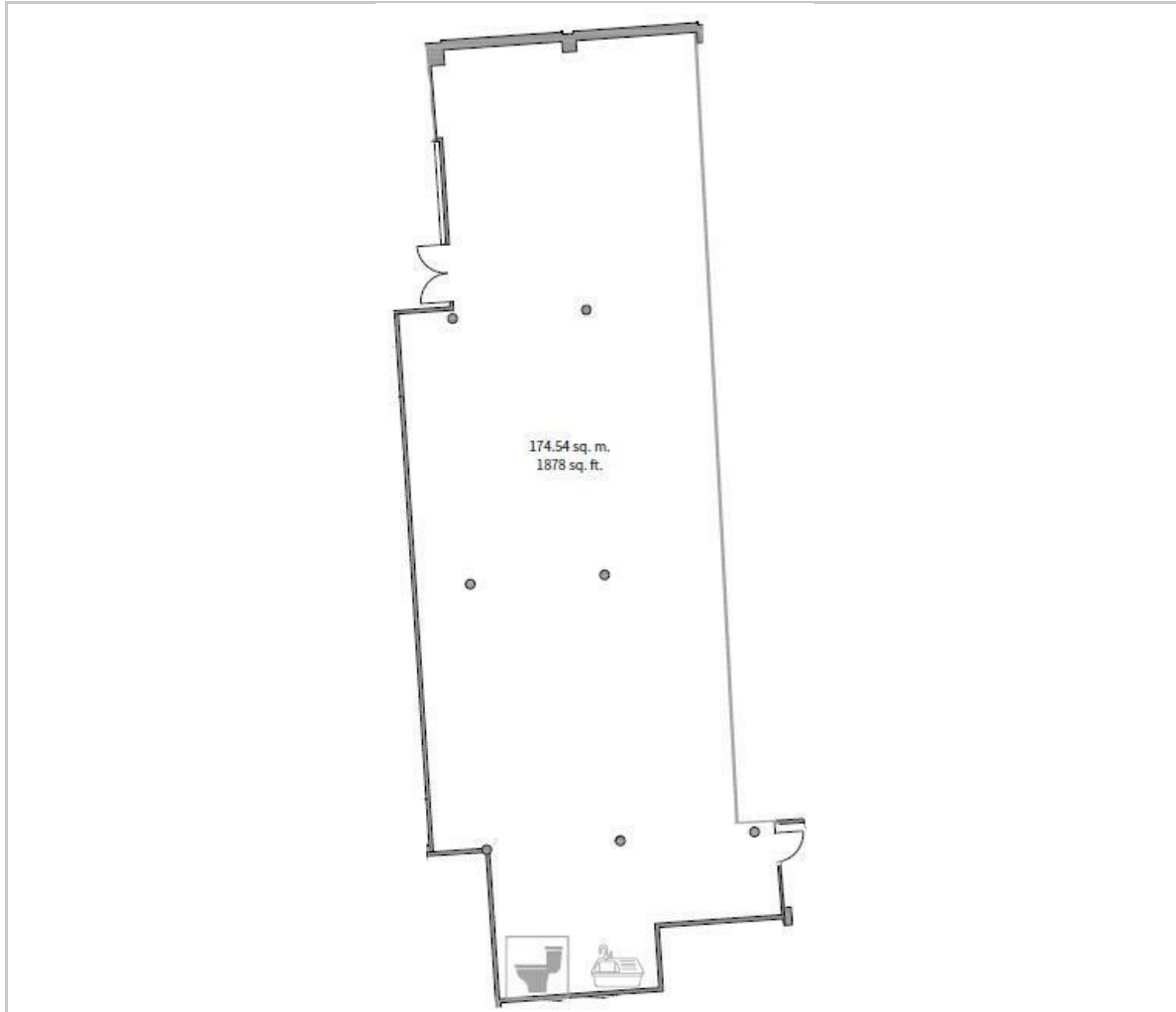
Terms

- Flexible lease terms available
- Rent, service charge and building insurance payable

AI-generated furnished image for illustrative purposes only.



Floor Plan



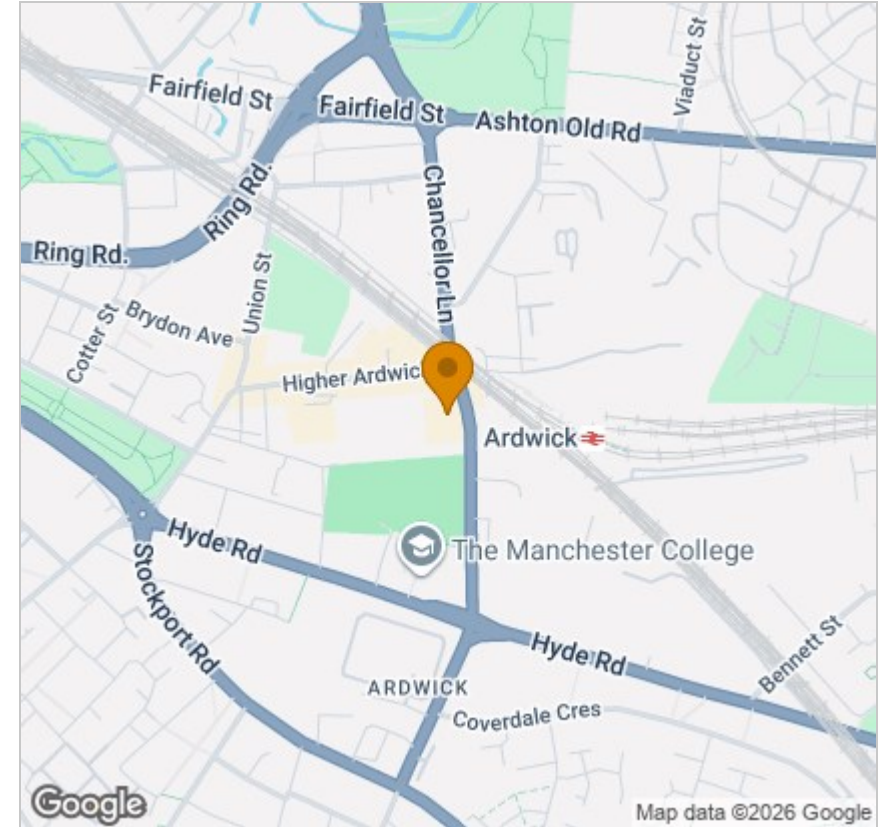
Viewing

Please contact our Manchester Office on 0161 296 8655 if you wish to arrange a viewing appointment for this property or require further information.

These particulars, whilst believed to be accurate are set out as a general outline only for guidance and do not constitute any part of an offer or contract. Intending purchasers should not rely on them as statements of representation of fact, but must satisfy themselves by inspection or otherwise as to their accuracy. No person in this firm's employment has the authority to make or give any representation or warranty in respect of the property.

39 Broughton Street Cheetham Hill, Manchester, Lancashire, M8 8LZ
Tel: 0161 296 8655 Email: manchester@belview.com <https://belview.com/>

Area Map



Energy Efficiency Graph

